

Christmas Medley

TÍMPANOS

Lorenzo Pusceddu

Allegro moderato (brillante) ♩ = 108-112

"ALLELUJA" (G.F. Haendel)
(brillante)

"ADESTE FIDELES" (Trad.)
(espressivo)

tutti

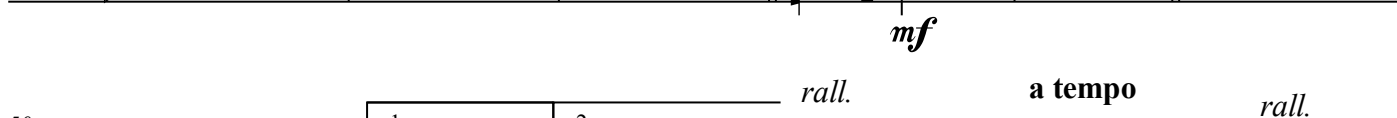


"DECK THE HALLS" (Trad.)

♩ = ♩ (spiritoso)



"STILLE NACHT" (F. Grubbe)
a tempo (espressivo)



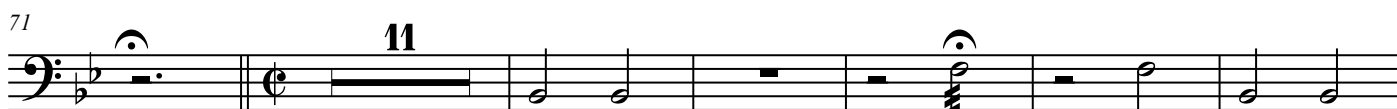
Allegro (spiritoso) ♩ = 128-132

"GOOD KING WENCESLAS" (Trad.)

rall.

a tempo

rall.

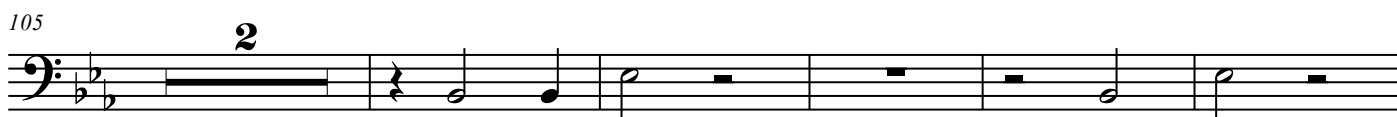


♩ = ♩ (sciolto)

"GLORIA IN EXCELSIS DEO" (Trad.)

(nobilmente)

"TOCHTER ZION" (G.F. Handel)



112

mf *f*

rall. *Più mosso* *(espressivo)*

(♩ = 136-140)

"GREENSLEEVES" (Trad.)

125 *rit.* (♩ = 150-140) "GREENSLEEVES" (trad.)

7 16 *mf*

153

4 2

[illegible][illegible]

199



222

2

1.

2.

rallentando

The musical score for the second ending is written on a single staff in bass clef with a key signature of one flat (B-flat). It begins with a double bar line and a first ending bracket labeled '1.' above it. The first ending consists of two measures: a whole rest followed by a half note G. This is followed by a double bar line and a second ending bracket labeled '2.' above it. The second ending consists of four measures: a half note G, a half note F, a half note E, and a half note D. Above the staff, there are two sets of first and second endings. The first set is above the first ending, and the second set is above the second ending. The tempo marking 'rallentando' is placed above the staff, and the tempo marking 'allargando' is placed below the staff.

Allegro moderato (brillante) ♩ = 108-112

allargando

230

RELLUGA (G.F. Haendel)

ff

235

235